



Waste Water Treatment & Pipeline Systems



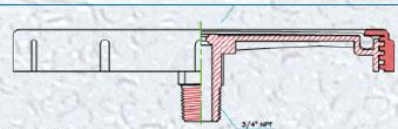
43^{year}

WASTEWATER TREATMENT EQUIPMENT

AQUAFLEX diffusers have been designed in the most efficient and most effective way to increase performance and decrease utility costs. Disc, plate and tube diffusers have bubbles of average diameter <2 mm which guarantee high oxygen transfer, high efficiency and minimum energy loss.

DISC DIFFUSERS

Most preferred model to use in WWTP.
Two models: ADD300-12" and ADD230-9", outlet 3/4" or 1"



TYPE	"Height or Total Dia (mm)"	"Dia-Effective/ Length Total (mm)"	Perforated Area (m2)	"Capacity (m3/h)"	Material of Membrane	"Total Weight (kg)"	Outlet
CBD80-3"	-	60/80	0,002	2-25	EPDM	0,04	3/4" male
ADD80-3"	46	60/80	0,002	2-5	EPDM	0,04	3/4" male
ADD230-9"	-	230/270	0,039	2-8	EPDM, Silicon & PTFE	0,55	3/4" / 1" male
ADD300-12"	-	300-340	0,066	2-12	EPDM, Silicon & PTFE	1,06	3/4" / 1" male
ATD63-500	67	500/560	0,10	2-8	EPDM, Silicon & PTFE	0,83	3/4" / 1" female
ATD63-750	67	750/810	0,15	2-10	EPDM, Silicon & PTFE	1,08	3/4" / 1" female
ATD63-1000	67	1000/1060	0,20	2-12	EPDM, Silicon & PTFE	1,37	3/4" / 1" female
ATD90-500	94	500/560	0,20	2-12	EPDM, Silicon, TPU & PTFE	1,25	3/4" / 1" female
ATD90-750	94	750/810	0,25	2-14	EPDM, Silicon, TPU & PTFE	1,62	3/4" / 1" female
ATD90-1000	94	1000/1060	0,32	2-16	EPDM, Silicon, TPU & PTFE	2,06	3/4" / 1" female
ATD118-1350	121	1350/1410	0,70	2-48	EPDM, Silicon, TPU & PTFE	3,65	3/4" / 1" female, modular



All AQUAFLEX wastewater equipments received quality certificates ISO 14001:2004, ISO 9001:2008 and passed an Oxygen Transfer Tests in Clean Water in a Glass Test Tank implemented by Technische Universität Darmstadt, Germany.

COARSE BUBBLE DIFFUSER

CBDD80-3" ve CBTD models are mainly used in equalization tanks. Can be used for mixture of any kind of wastewater.





PLATE DIFFUSERS

Model APD650 and APD1100 designed for best efficiency and use of space in big wastewater treatment plants.



TYPE	"Height or Total Dia (mm)"	"Dia-Effective/Length Total (mm)"	Perforated Area (m2)	"Capacity (m3/h)"	Material of Membrane	"Total Weight (kg)"	Outlet
APD650 Plate Diffuser	61	150*650/210*680	0.10	2-16	EPDM, Silicon & PTFE	1.37	1" male
APD1100 Plate Diffuser	61	185*1070/270*1105	0.20	2-25	EPDM, Silicon & PTFE	3.53	2" male - 30 mm male



DRINKING WATER TREATMENT EQUIPMENT

AQUAFLEX filter nozzles for filtration of drinking water are designed to have minimum pressure loss and maximum filtration speed. Made from PP, GFR30, PVDF, ABS or POM material. AQUAFLEX filter nozzles can be used also in sand, in activated carbon, in concrete and in ion exchange resin treatment

AQUAFLEX filter nozzle equipment: fixing nuts for any type of thread and material; screw anchors and expanding bolts, open filters and pressure filters.

AQUAFLEX drinking water equipment is a DIN EN ISO 9001:2008 certified brand and had obtained WRAS, KTW and TZW certificate. It is safe to be used in processes with food and drinking water.



BioAQUA-MBBR



Micro-organisms begin the process "Moving Bed Biofilm Reactor" by creating multiple layers on surface of BioAqua.

BioAQUA MBBR is an effective process in wastewater treatment. BioAQUA-MBBR was designed to have perfect contact with liquid in the tank and still providing the maximum surface for biofilm growth.



"WE GIVE LIFE TO THE WATER..."

aquaflex

TUBE DIFFUSERS

Perfect Solution for long aeration tanks in biological or domestic WWTP.
In addition to standard sizes any cut-to-size dimensions can be produced.



aquaflex

ACCESSORIES

Grommed, PP saddles, nipple and long nipple for pipe-diffuser connection, Z support, fix clamps, adjustable clamps and membranes suitable for diffusers of other producers as well.



Grommed



PP Saddle



Ø114,3 mm PP Saddle 3/4" vs 1" Female
25,5 mm and 22,5 mm Insert Options



Accessories



Z Support



Fix Clamp



Adjustable Clamps



Other Clamp Options

REPAIR AND CONNECTION EQUIPMENT

AQUAFLEX repair and connection equipment is excellent solution for connection of any pipeline systems and reparation of unexpected damages that can appear. AQUAFLEX equipment is suitable for any pipes serving for water, wastewater, gas and other liquid and vaporized material.

REPAIR CLAMP and TAPPING EQUIPMENT

Body is AISI304 or AISI316 stainless steel material. Gasket is EPDM, NBR, SBR or VITON material.
AQUAS10 – one, AQUAS20 – two, AQUAS30 – three bolt sections.



AQUAS10



AQUAS20



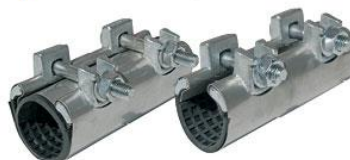
AQUAS30



Flanged and Muff Outlet Clamps. ATT, ATC and ATS models.

SURFACE BOX

Lid – GGG40
Body – PA (Polyamide)
Bolts – SS304
Adjustable (TELESCOPIC)



AQUASMini Snap Clamp and Wrap Clamp designed for pipes with small diameter.

COUPLING and SLEEVE REPAIR CLAMP

Body is AISI304 or AISI316 stainless steel material. Gasket is EPDM, NBR or SBR material.



BRASS PRODUCTS

Water Meter Unions,
Nipple, Reduction, Tee,
Elbow, Union Hose,
Water Meter Spare
Parts.

SAFETY LOCK

Water Meter Unions, Gas,
Petrol, Oil lines.



AQUA-TAPPING SADDLE

At water and gas lines
For PE, PVC pipes Ø63, 75, 90, 110
Connection equipment with Ø25, 32 outlet diameters.

CONNECTION EQUIPMENT

AUC Coupling and AUFA Flange Adaptor.
Steel, High Quality Ductile Iron GGG40 and Epoxy Coating.
St37 Galvanised, Geomet Coated, SS304 or SS316 Screw Options.



SMALL CLAMPS

For 1/2" - 3/4" - 1" - 1-1/4" - 1-1/2" - 2" dia. pipes.
Body- GGG40, Gasket: EPDM, NBR and other options.
Screws- Galvanised Steel, SS304 or SS316

aquaflex

Stainless steel is in accordance with ISO 7005-1 and DIN 2576/2642 standards. Following certificates were obtained for AQUAFLEX repair and connection equipment: WRAS, TZW-KTW certificate, ISO 14001:2004, ISO 9001:2008, TSE certificate.



ABOUT US

ERSIN GROUP was founded in 1974 under the name of "Ersin Molding Machine Industry". With years of work within the industry we significantly developed our product range, technical knowledge and quality requirements. AQUAFLEX brand was developed in 2002. AQUAFLEX was created to focus on two product lines: "Drinking Water and Wastewater Treatment Plant Equipment" and "Connection and Repair Equipment for Pipeline Systems". AQUAFLEX is already well accepted brand in water and gas industry in over 50 countries of the world with high quality control, constant development and competitive prices.

"WE GIVE LIFE TO THE WATER..."



Waste Water Treatment & Pipeline Systems

CONTACT

ÜÇBEYLER ALTYAPI ARITMA İNŞ. TURZ. ENERJİ İMALAT İTH. İHR. SAN. TİC. A.Ş.

Üçevler Mh. 27. Sk. No.36/1 Nilüfer-Bursa/TURKEY

Tel. : +90 224 441 12 08-09 Fax : +90 224 441 10 15

e-mail : export@aquaflex.com.tr

www.aquaflex.com.tr